

# VISION RT Log 1:500

IDEAL Version: ID11\_0C\_01 <MD > Vertical Scale: 1:500

Graphics File Created: 07-Aug-2006 05:17

## PIP SUMMARY

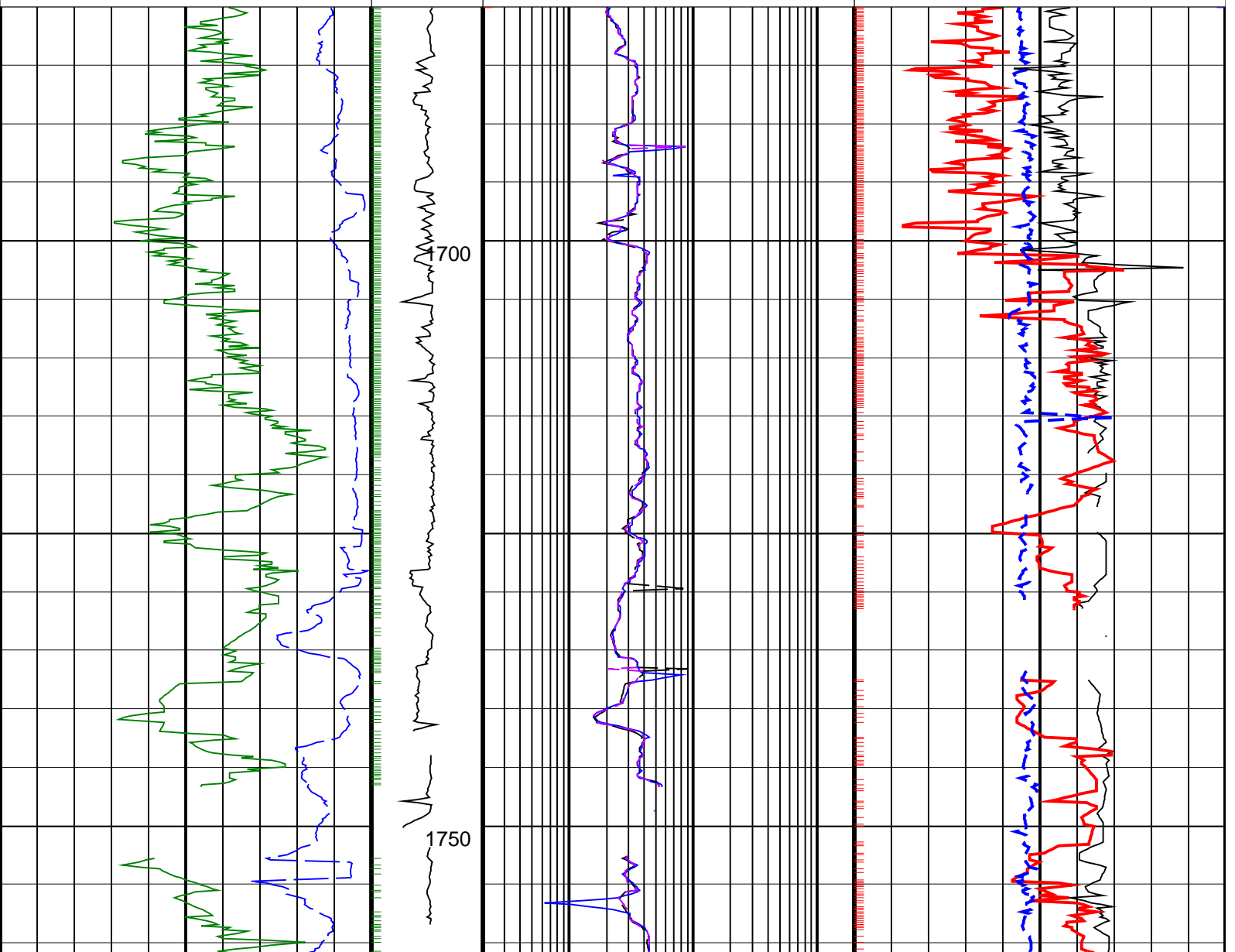
└ ARC Gamma Ray Samples

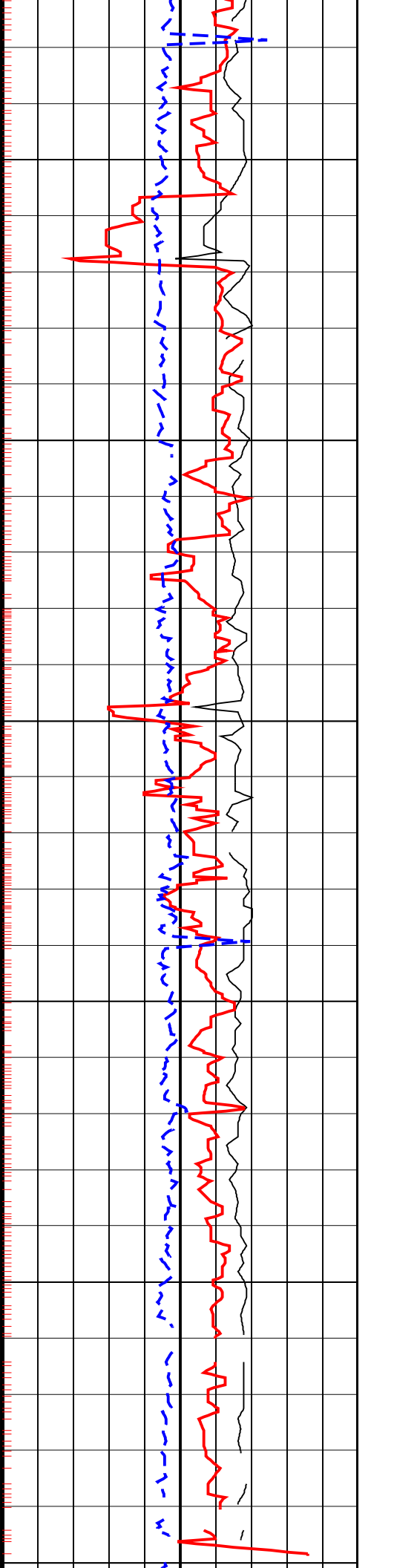
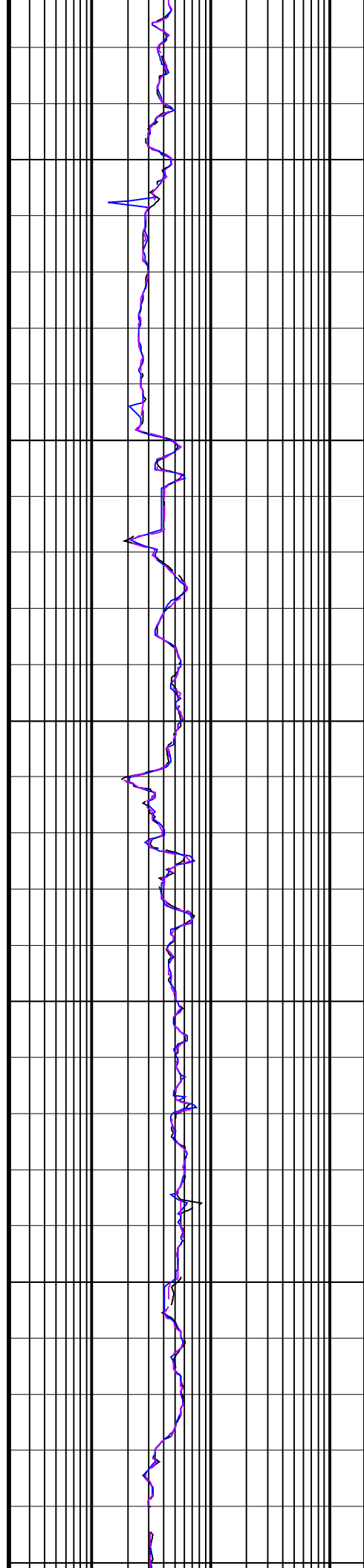
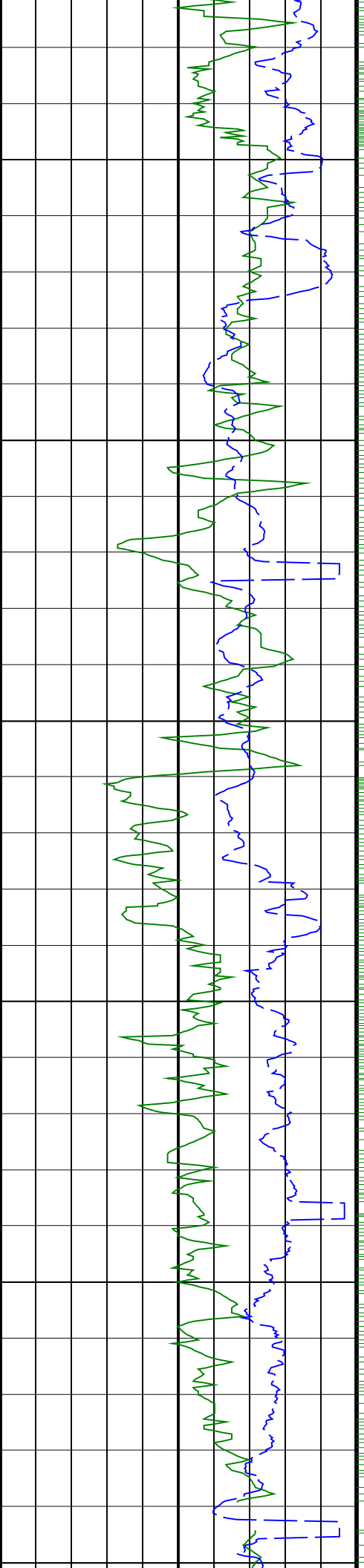
└ ARC Resistivity Samples

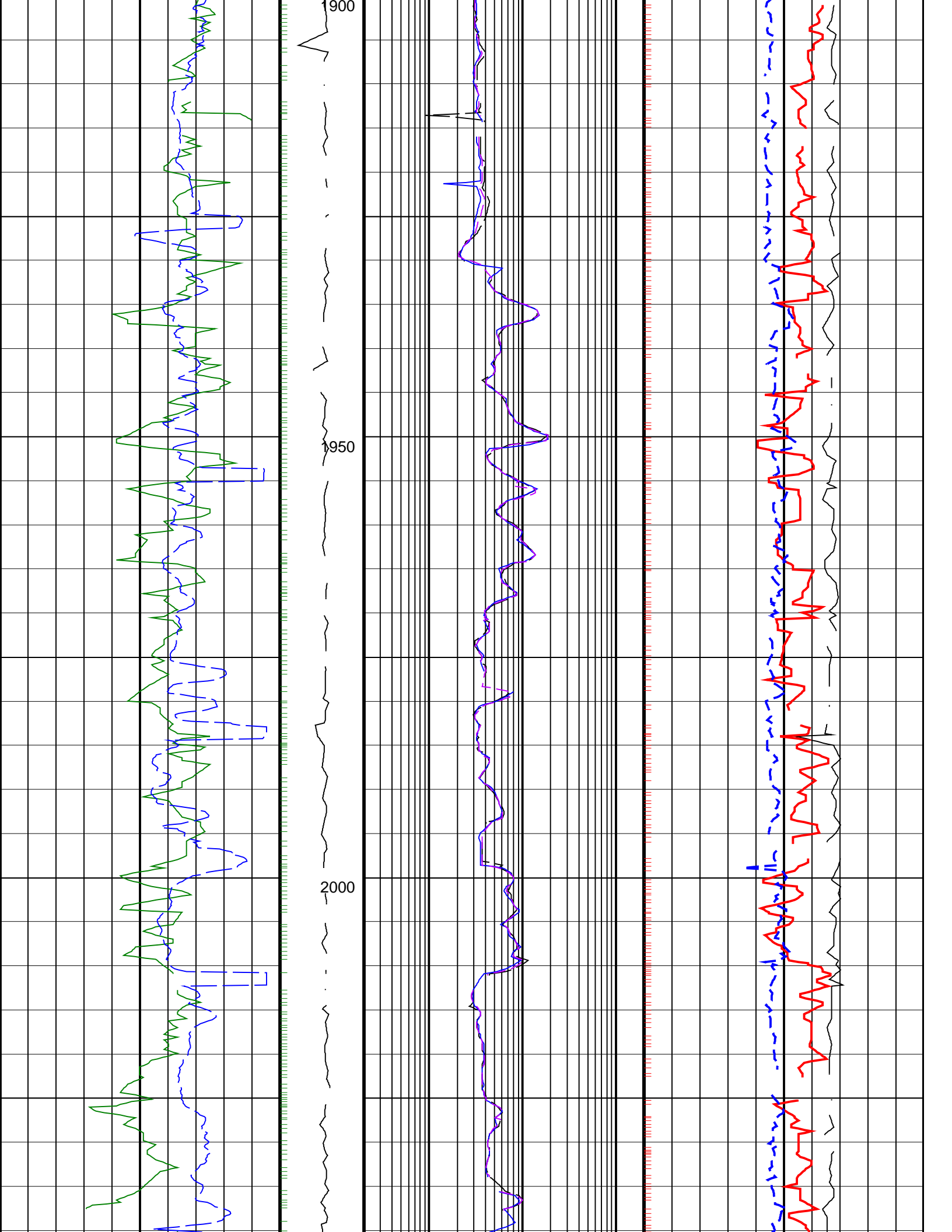
Density Ticks, 0.1 ft └

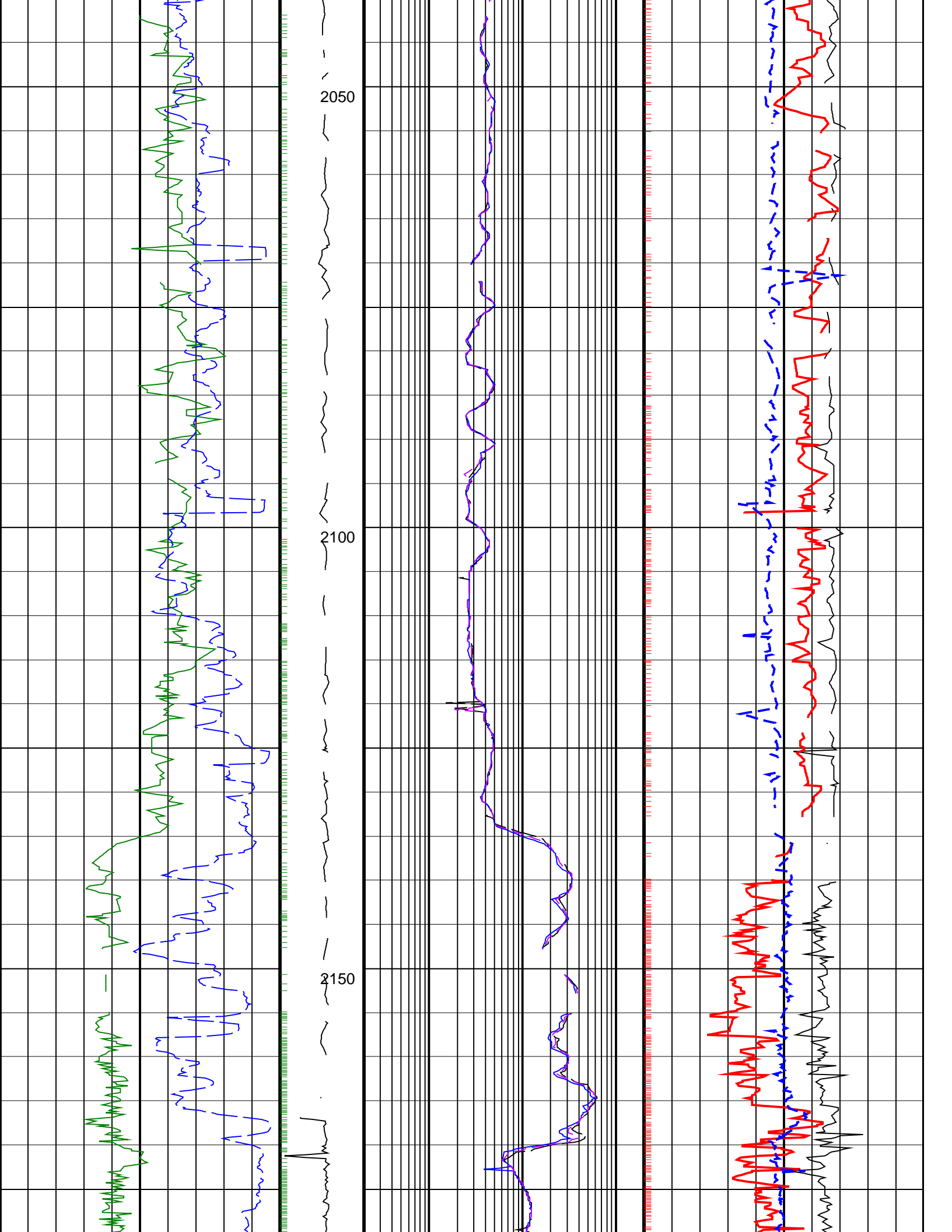
Neutron Ticks, 0.1 ft └

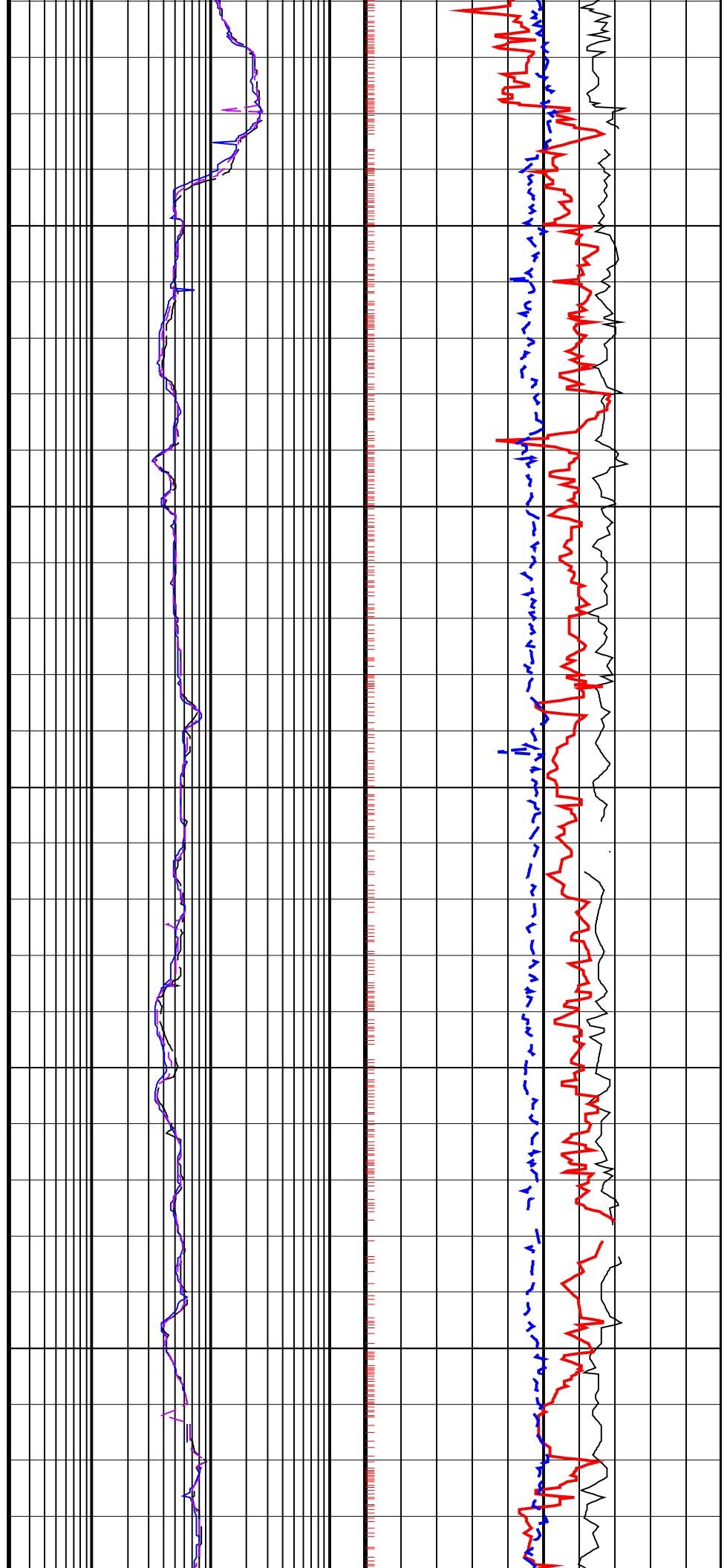
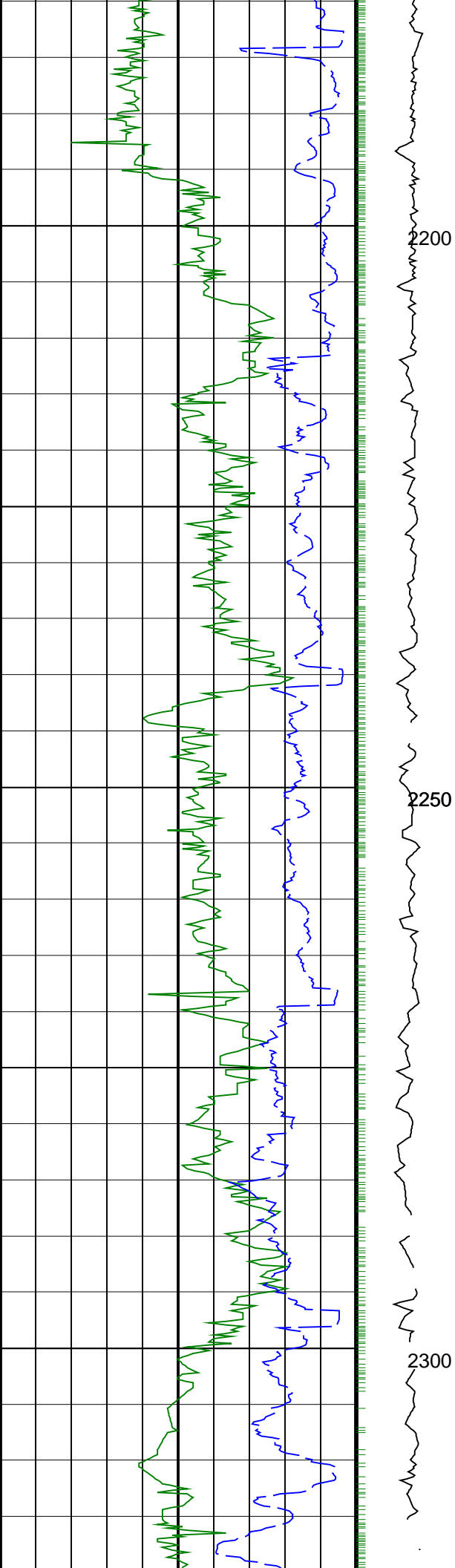
ARC Gamma Ray, Real-Time (ARC_GR_RT) (GAPI) 0 200	ARC BHCorr Phase-Shift Resistivity 28-in. at 2 MHz, Real-Time (P28H_RT) (OHMM) 0.2 200	Thermal Neutron Ratio, Bottom, Real-Time (TNRB_RT) (----) 45 -15
	ARC BHCorr Phase-Shift Resistivity 16-in. at 2 MHz, Real-Time (P16H_RT) (OHMM) 0.2 200	Bulk Density, Bottom, Real-Time Computed Downhole (ROBB_DH_RT) (G/C3) 1.85 2.85
ROP*5 (ROP5) (M/HR) 200 0	MWD Collar RPM (CRPM_RT) (RPM) 0 400	ARC BHCorr Phase-Shift Resistivity 40-in. at 2 MHz, Real-Time (P40H_RT) (OHMM) 0.2 200
		Bulk Density Correction, Bottom, Real-Time Computed Downhole (DRHB_DH_RT) (G/C3) -0.25 0.25

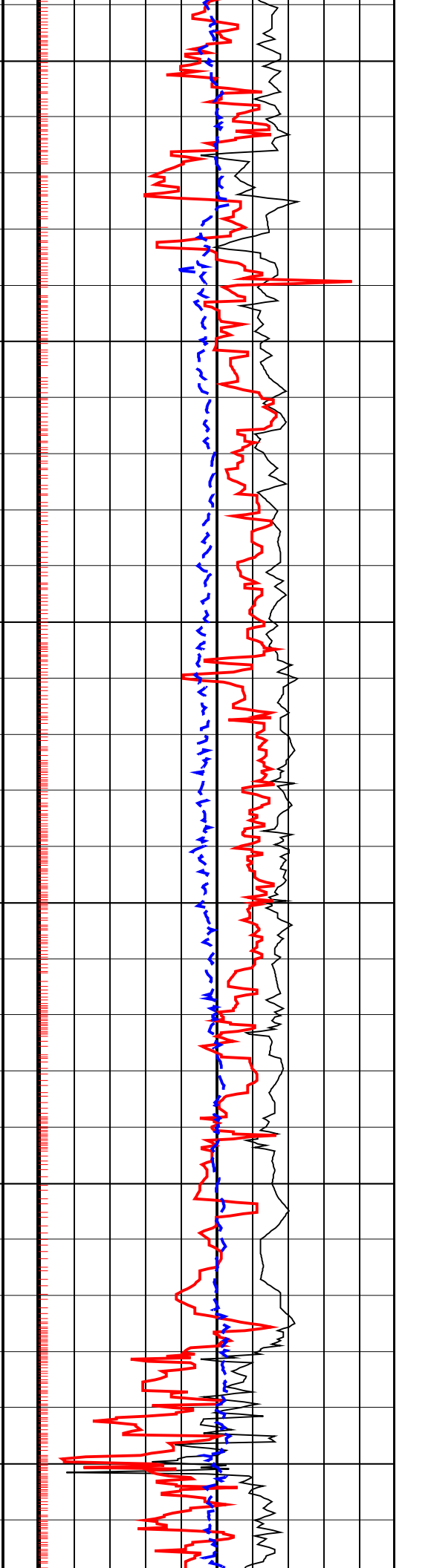
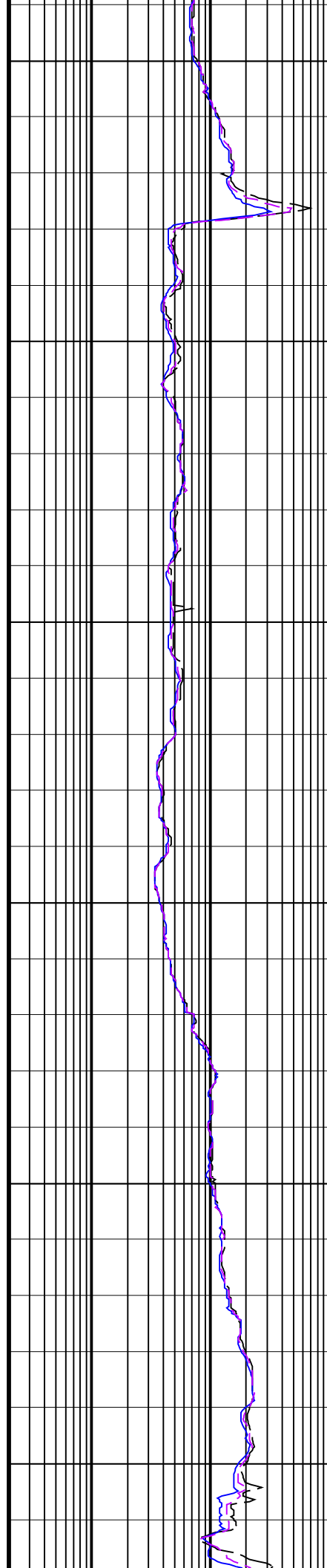
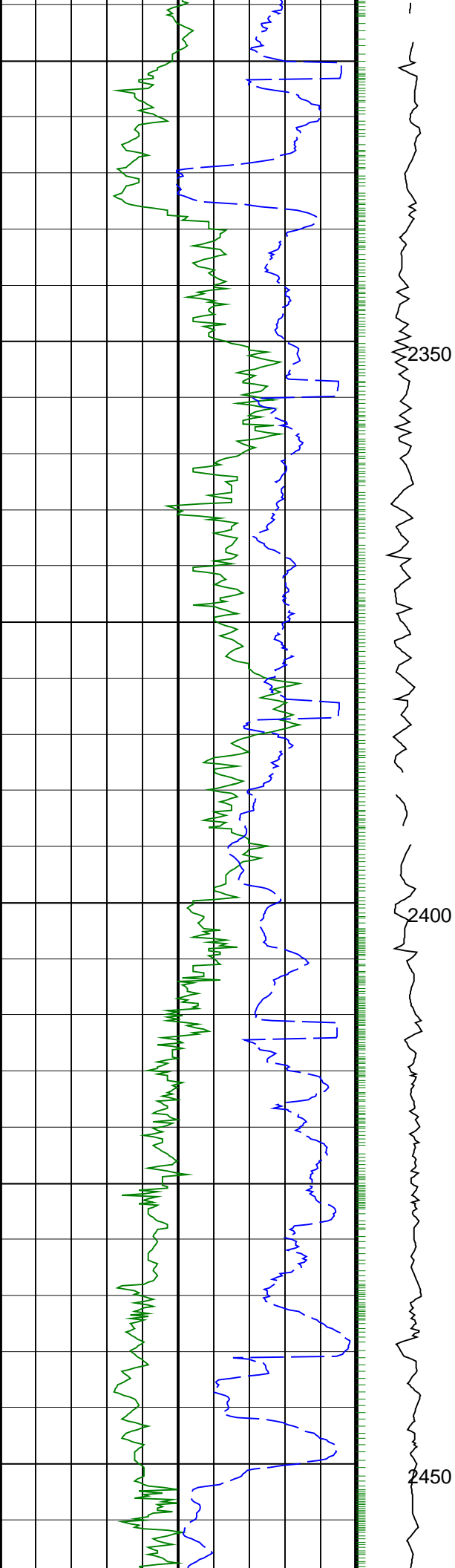


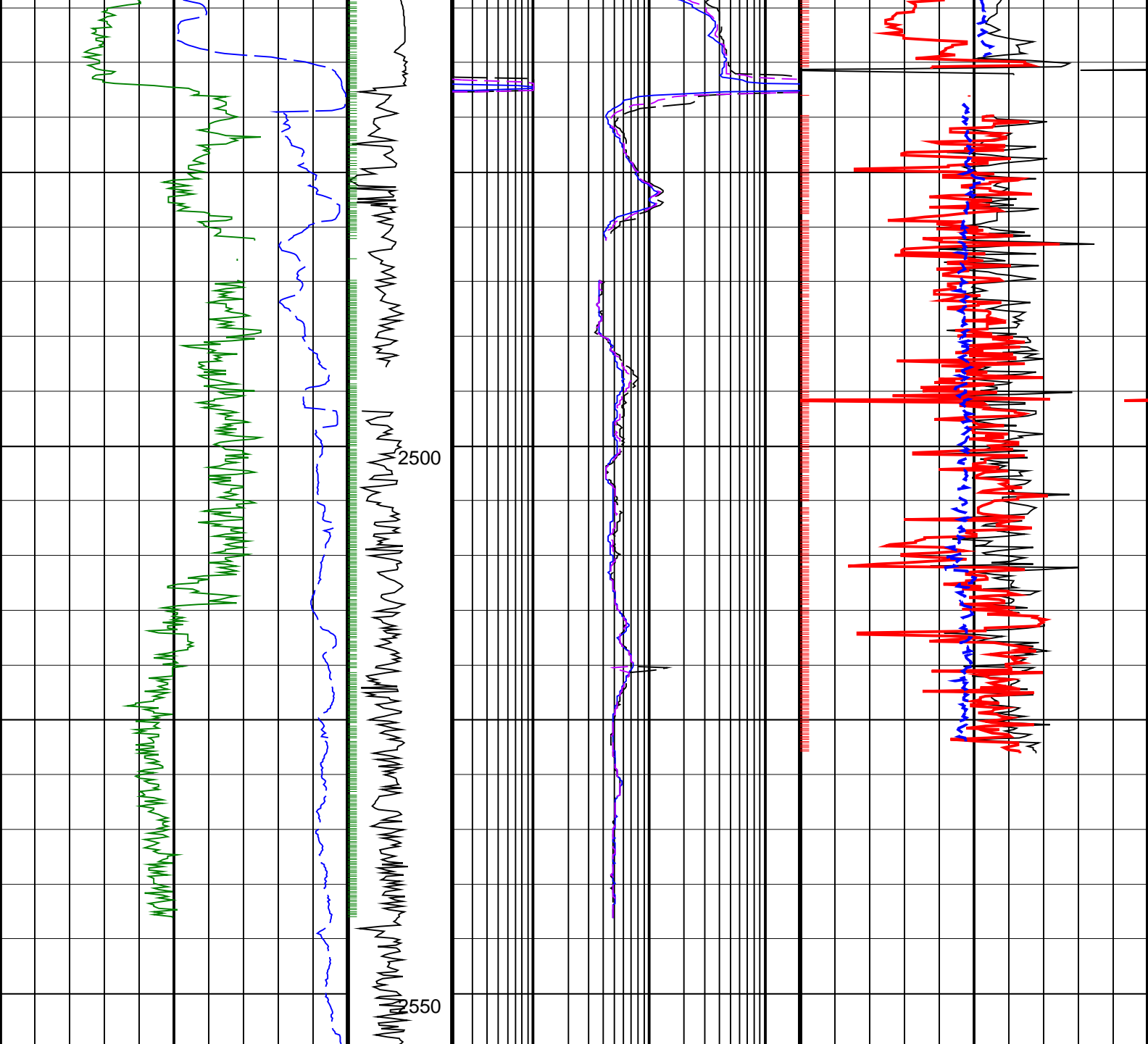












<div> <div>ROP*5 (ROP5)</div> <div>200 (M/HR) 0</div> </div>	<div> <div>MWD Collar RPM</div> <div>(CRPM_RT)</div> <div>(RPM)</div> </div>	<div> <div>ARC BHCorr Phase-Shift Resistivity</div> <div>40-in. at 2 MHz, Real-Time (P40H_RT)</div> </div>	<div> <div>Bulk Density Correction, Bottom,</div> <div>Real-Time Computed Downhole (DRHB_DH_RT)</div> </div>
	<div> <div>0</div> <div>400</div> </div>	<div> <div>0.2</div> <div>(OHMM)</div> <div>200</div> </div>	<div> <div>-0.25</div> <div>(G/C3)</div> <div>0.25</div> </div>
<div> <div>ARC Gamma Ray, Real-Time (ARC_GR_RT)</div> <div>0 (GAPI) 200</div> </div>		<div> <div>ARC BHCorr Phase-Shift Resistivity</div> <div>16-in. at 2 MHz, Real-Time (P16H_RT)</div> </div>	<div> <div>Bulk Density, Bottom, Real-Time</div> <div>Computed Downhole (ROBB_DH_RT)</div> </div>
		<div> <div>0.2</div> <div>(OHMM)</div> <div>200</div> </div>	<div> <div>1.85</div> <div>(G/C3)</div> <div>2.85</div> </div>
		<div> <div>ARC BHCorr Phase-Shift Resistivity</div> <div>28-in. at 2 MHz, Real-Time (P28H_RT)</div> </div>	<div> <div>Thermal Neutron Ratio, Bottom,</div> <div>Real-Time (TNRB_RT)</div> </div>
		<div> <div>0.2</div> <div>(OHMM)</div> <div>200</div> </div>	<div> <div>45</div> <div>(----</div> <div>-15</div> </div>

## PIP SUMMARY

## ARC Gamma Ray Samples

### ARC Resistivity Samples

**Density Ticks, 0.1 ft**

Neutron Ticks, 0.1 ft 